

HERA & OLYMPUS



HALL SPECIFICATIONS

Area	798m ²
Length x Width	
Ceiling Height	5,00m (chandelier 3.65m)
Main Door	2,00 x 2,20m
Day Light	NO
Floor Cover	Carpet
Floor Level	0

ROOM CAPACITIES

Theater	-
Classroom	-
U-Shape	-
Banquet:	
Cocktail	800
Buffet	
Served Menu	

TECHNICAL PACKAGE

WiFi	YES
AV	YES
Stage	YES
Sound	YES
Lights	YES

ABOUT THE ROOM

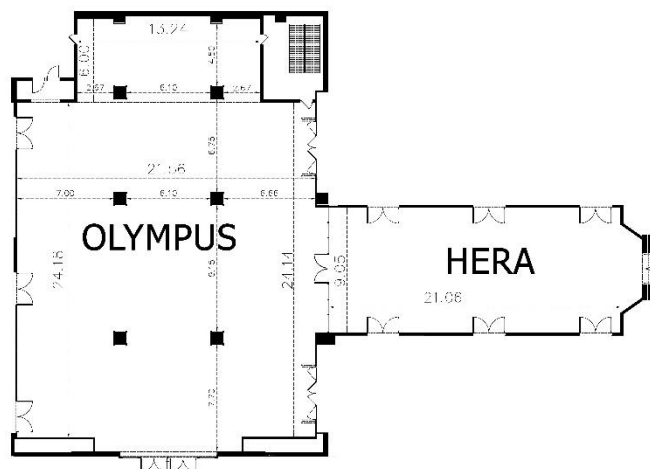
HERA & OLYMPUS

Hera & Olympus may be united into one big Foyer, which will connect the other rooms of the Level 0. It is the best choice for a Foyer in the Level 0 and definitely the most convenient point for your delegates to take a break and exchange views. Hera & Olympus is also an excellent place to be used for standing cocktails, or as an exhibition area.

HALL VIEW



HALL PLAN



FLOOR PLAN – LEVEL 0

