

ZEUS



creta
Convention Centre

HALL SPECIFICATIONS

| | |
|----------------|--------------------------|
| Area | 1,251m ² |
| Length x Width | 43,98 x 24,06 - 32.35 m |
| Ceiling Height | 6,85m (chandelier 4.95m) |
| Main Door | 1,80X2,30m |
| Day Light | YES |
| Floor Cover | Carpet |
| Floor Level | +1 |

ROOM CAPACITIES

| | |
|-------------|-------|
| Theater | 1,700 |
| Classroom | 1,000 |
| U-Shape | 200 |
| Banquet: | |
| Cocktail | 1,400 |
| Buffet | 800 |
| Served Menu | 1,000 |

TECHNICAL PACKAGE

| | |
|--------|-----|
| WiFi | YES |
| AV | YES |
| Stage | YES |
| Sound | YES |
| Lights | YES |

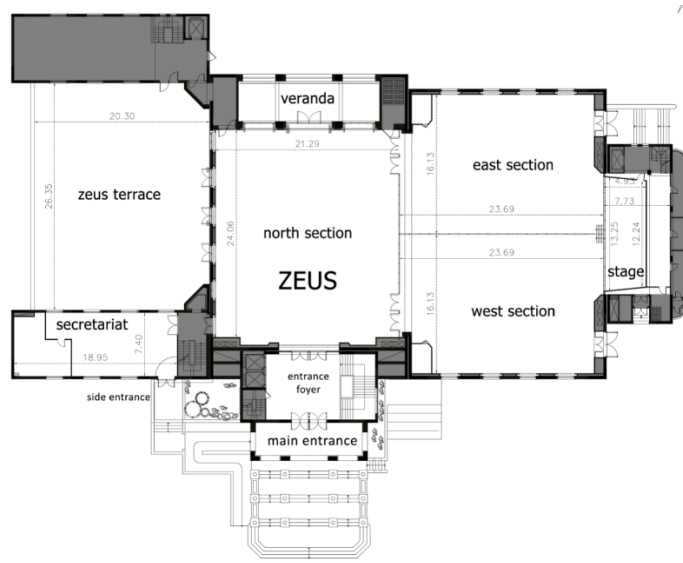
ABOUT THE ROOM

Zeus is the largest room of our Convention Centre accommodating up to 1700 delegates. With big windows, full of daylight, this conference room offers you countless choices for set up. Zeus may be separated to four different ways, Zeus East & Zeus West, Zeus East, Zeus West and Zeus North, thus enabling you to create the perfect setting for your event. Zeus Hall is connected with Zeus Terrace with sea view. This conference room even offers you a separate F&B preparation area. Our side door, with an opening that can welcome a car/pickup truck entering the hall, allow all your production equipment and exhibition stands to be brought effortlessly into this first-floor hall.

HALL VIEW



HALL PLAN



FLOOR PLAN – LEVEL 1

